

# RMH8EC(M)4000

Shim type

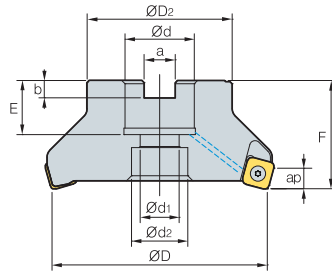
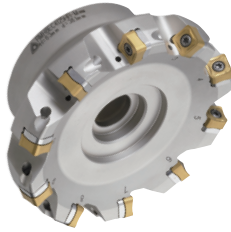


Fig. 1

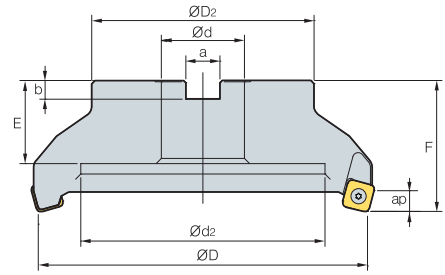


Fig. 2



AA  
75°

• AR: -6°  
• RR: -8°~ -6°

(mm)

Designation	⊙	ØD	ØD2	Ød	Ød1	Ød2	a	b	E	F	ap	$\frac{a}{kg}$	Fig.	
RMH8EC (RMH8ECM)	4080HR-M	7	80	57	25.4 (27)	14	20	9.5 (12.4)	6 (7)	25 (23)	50	9.0	1.1	1
	4100HR-M	8	100	67	31.75 (32)	18	26	12.7 (14.4)	8	33 (25.5)	63 (50)	9.0	2.5	1
	4125HR-M	10	125	87	38.1 (40)	22	32	15.9 (16.4)	10 (9)	36 (30)	63	9.0	3.0	1
	4160R-M	12	160	107	50.8 (40)	-	107	19 (16.4)	11 (9)	38 (32)	63	9.0	4.0	2
	4200R-M	16	200	130	47.625 (60)	-	135	25.4 (25.7)	14	38 (32)	63	9.0	5.9	2
	4250R-M	16	250	180	47.625 (60)	-	180	25.4 (25.7)	14	38 (32)	63	9.0	10.9 (10.6)	2
	4315R-M	20	315	240	47.625 (60)	-	238	25.4 (25.7)	14	38	63	9.0	18.1 (17.9)	2
	4400R-M	24	400	260	47.625 (60)	-	238	25.4 (25.7)	14	38	80	9.0	31.8 (31.5)	2

( )Metric size

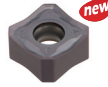
## Available inserts

SNM(E)X-MF

SNEX-ML

SNM(E)X-MM

SNEX-MA



Designation	Cermet		Coated										Uncoated			page			
	CN2000	CN30	NCM325	NC5330	NCM535	NCM545	PC2505	PC2010	PC3600	PC3700	PC6510	PC9530	PC9540	PC5300	PC5400		ST30A	G10	H01
SNEX	1206ENN-MF										●			●	●				E22 E23 E24
	1206ENN-ML													●	●				
	1206ENN-MM								●					●	●				
	1206ENN-MA																	●	
SNMX	1206ENN-MF				●				●	●	●		●	●	●				
	1206ENN-MM				●				●	●	●		●	●	●				

## Available arbors

Designation	Available arbors		
	RMH8EC	RMH8ECM	
RMH8EC (RMH8ECM)	4080HR-□	BT□□-FMA25.4-□□	BT□□-FMC27-□□
	4100HR-□	BT□□-FMA31.75-□□	BT□□-FMC32-□□
	4125HR-□	BT□□-FMA38.1-□□	BT□□-FMB40-□□
	4160R-□	BT□□-FMA50.8-□□	BT□□-FMC40-□□
	4200R-□		
	4250R-□		
	4315R-□		
	4400R-□	BT□□-FMA47.625-□□	BT□□-FMB60-□□

## Parts

Specification				
Ø80~Ø400	PTKA0411-R3	SS42RM8	SHXN0609F	TW15S

Available inserts E22~E24 Available arbors and bolt E400~E402

